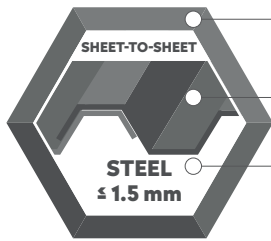




SELF-DRILLING LOW PROFILE SCREW DP2 SQUARE DRIVE

APPLICATION



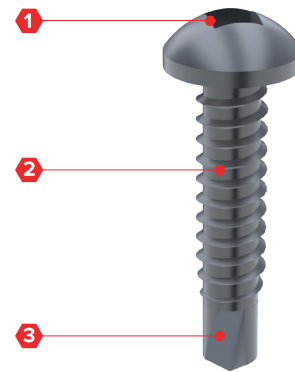
SS SUS410

Sheet-to-sheet

Steel ≤ 1,5 mm

SPECIFICATION

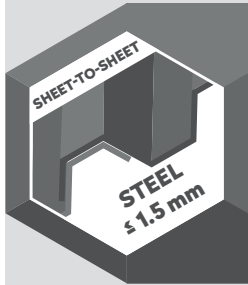
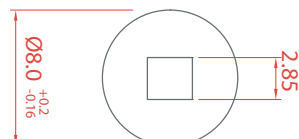
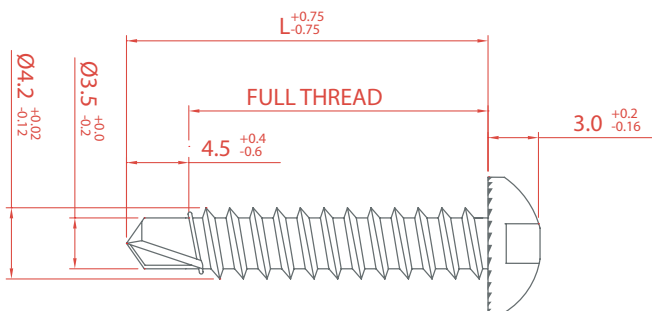
- 1 Head style square drive with serrations
- 2 Thread for substructure steel ≤ 1,5 mm
- 3 Drilling point 2 reduced



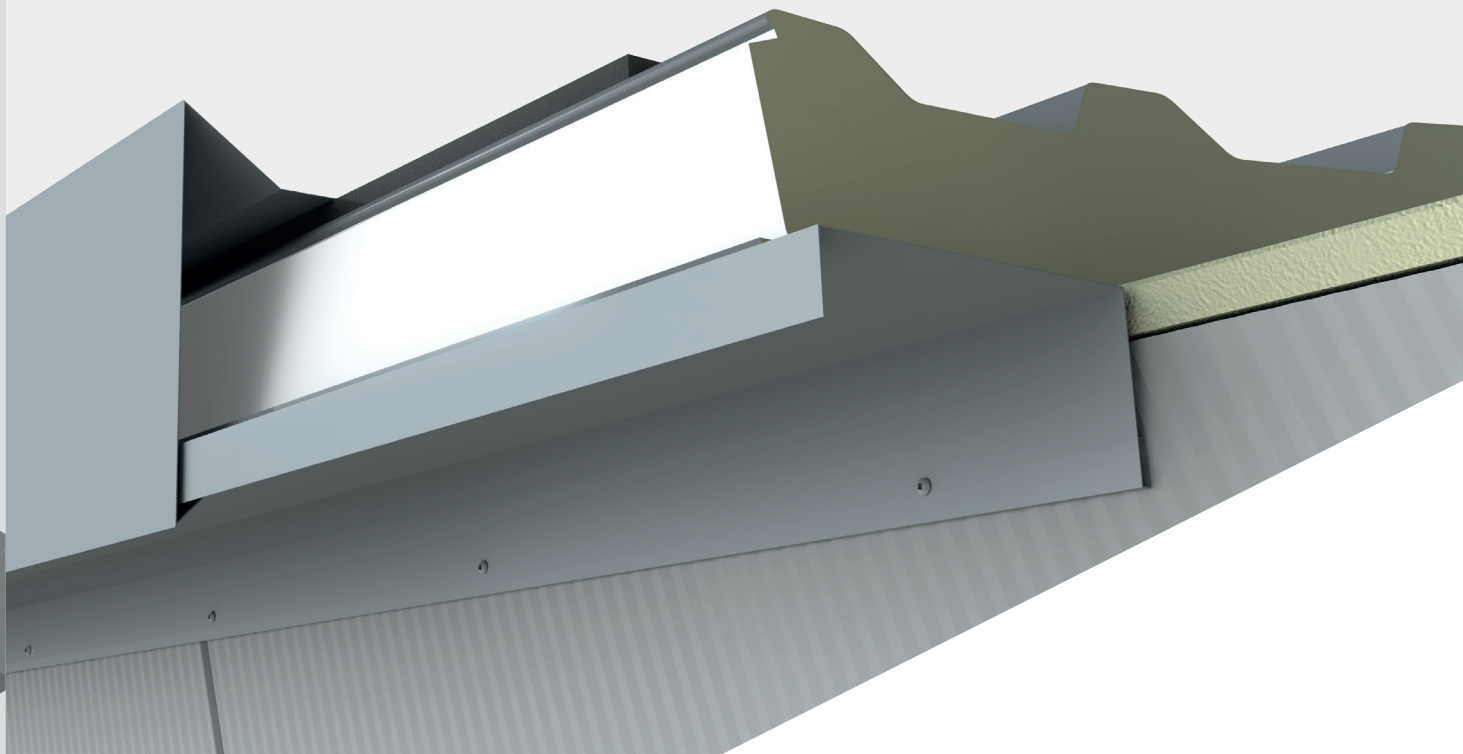
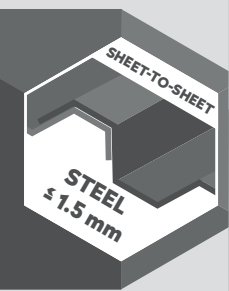
OPTIONS

- 1 Powder coated in any desired colour

SECTION



STITCHING SCREWS - STEEL ≤ 1,5 MM - SS SUS410




ORDER INFORMATION


Product	Size	Packaging	Article code
Self-Drilling low profile screw 4,2 x L - DP2	4,2 x 16 mm	500 pcs/box	20030242016SQ
Self-Drilling low profile screw 4,2 x L - DP2	4,2 x 19 mm	500 pcs/box	20030242019SQ

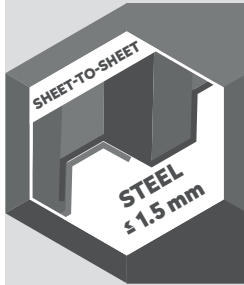
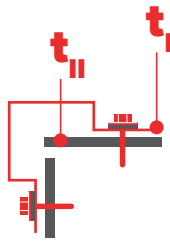
STITCHING SCREWS - STEEL ≤ 1,5 MM - SS SUS410

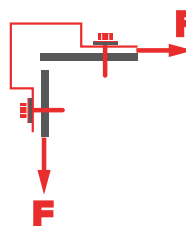
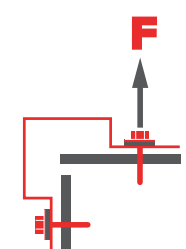
SELF-DRILLING LOW PROFILE SCREW 4,2 X L - DP2, SQUARE DRIVE 8 MM

Materials	
Screw	SS 1.4006 (SUS410) - conform EN3506
Washer	SS 1.4301 (A2) - conform EN3506
Material A (t_{II})	S280GD, S320GD and S350GD conform EN 10346
Material B (t_{II})	S235 conform EN 10025-2, S280GD, S320GD and S350GD conform EN 10346
Drilling capacity	Steel $\leq 1,5$ mm







	t_{N1} [mm]	t_{II} [mm]										
		0,40	0,50	0,55	0,63	0,75	0,88	1,00	1,13	1,25	1,50	2,00
 $V_{R,k}$ [kN]	0,40	0,53	0,53	0,53	0,53	0,53	0,53	0,53	0,53	0,53	0,53	0,53
	0,50	0,53	0,80	0,80	0,80	0,80	0,80	0,80	0,80	0,80	0,80	0,80
	0,55	0,53	0,80	0,93	0,93	0,93	0,93	0,93	0,93	0,93	0,93	0,93
	0,63	0,53	0,80	0,93	1,14	1,14	1,14	1,14	1,14	1,14	1,14	1,14
	0,75	0,53	0,80	0,93	1,14	1,46	1,46	1,46	1,46	1,46	1,46	1,46
	0,88	0,53	0,80	0,93	1,14	1,46	2,35	2,35	2,35	2,35	2,35	2,35
	1,00	0,53	0,80	0,93	1,14	1,46	2,35	2,35	2,35	2,35	2,35	2,35
	1,13	0,53	0,80	0,93	1,14	1,46	2,35	2,35	2,35	2,35	2,35	2,35
	1,25	0,53	0,80	0,93	1,14	1,46	2,35	2,35	2,35	2,35	2,35	2,35
 $N_{R,k}$ [kN]	0,40	0,26	0,42	0,47	0,55	0,66	0,88	0,88	0,88	0,88	0,88	0,88
	0,50	0,26	0,42	0,47	0,55	0,66	1,00	1,21	1,33	1,33	1,33	1,33
	0,55	0,26	0,42	0,47	0,55	0,66	1,00	1,21	1,44	1,46	1,46	1,46
	0,63	0,26	0,42	0,47	0,55	0,66	1,00	1,21	1,44	1,65	1,68	1,68
	0,75	0,26	0,42	0,47	0,55	0,66	1,00	1,21	1,44	1,65	2,01	2,01
	0,88	0,26	0,42	0,47	0,55	0,66	1,00	1,21	1,44	1,65	2,08	2,44
	1,00	0,26	0,42	0,47	0,55	0,66	1,00	1,21	1,44	1,65	2,08	2,44
	1,13	0,26	0,42	0,47	0,55	0,66	1,00	1,21	1,44	1,65	2,08	2,44
	1,25	0,26	0,42	0,47	0,55	0,66	1,00	1,21	1,44	1,65	2,08	2,44

Note

1. Above mentioned values are characteristic values
2. To determine the design value we advise to apply a material factor of $\gamma_m = 1,33$.
3. You can find further information and calculation examples on page 10.1.7.

STITCHING SCREWS - STEEL $\leq 1,5$ MM - SS SUS410

