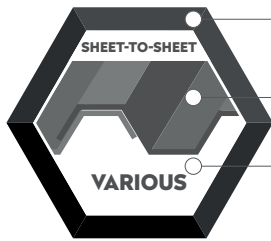




# GAS-TIGHT BLIND RIVET CUP SS A2 / C1

## APPLICATION



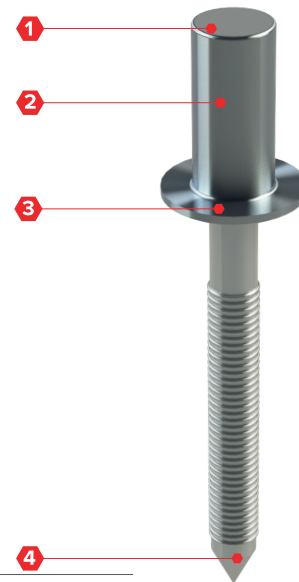
SS A2 / C1

Sheet-to-sheet

Various

## SPECIFICATION

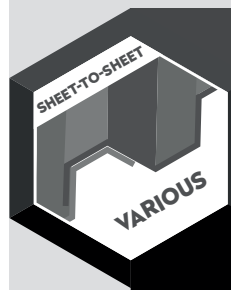
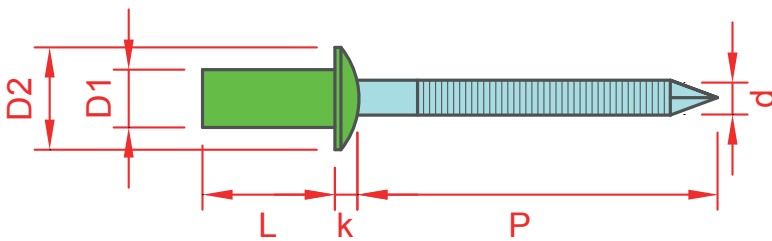
- 1 Mandrel head (SS A2)
- 2 Rivet body (SS A2)
- 3 Nail head (SS A2)
- 4 Mandrel (Stainless steel C1)

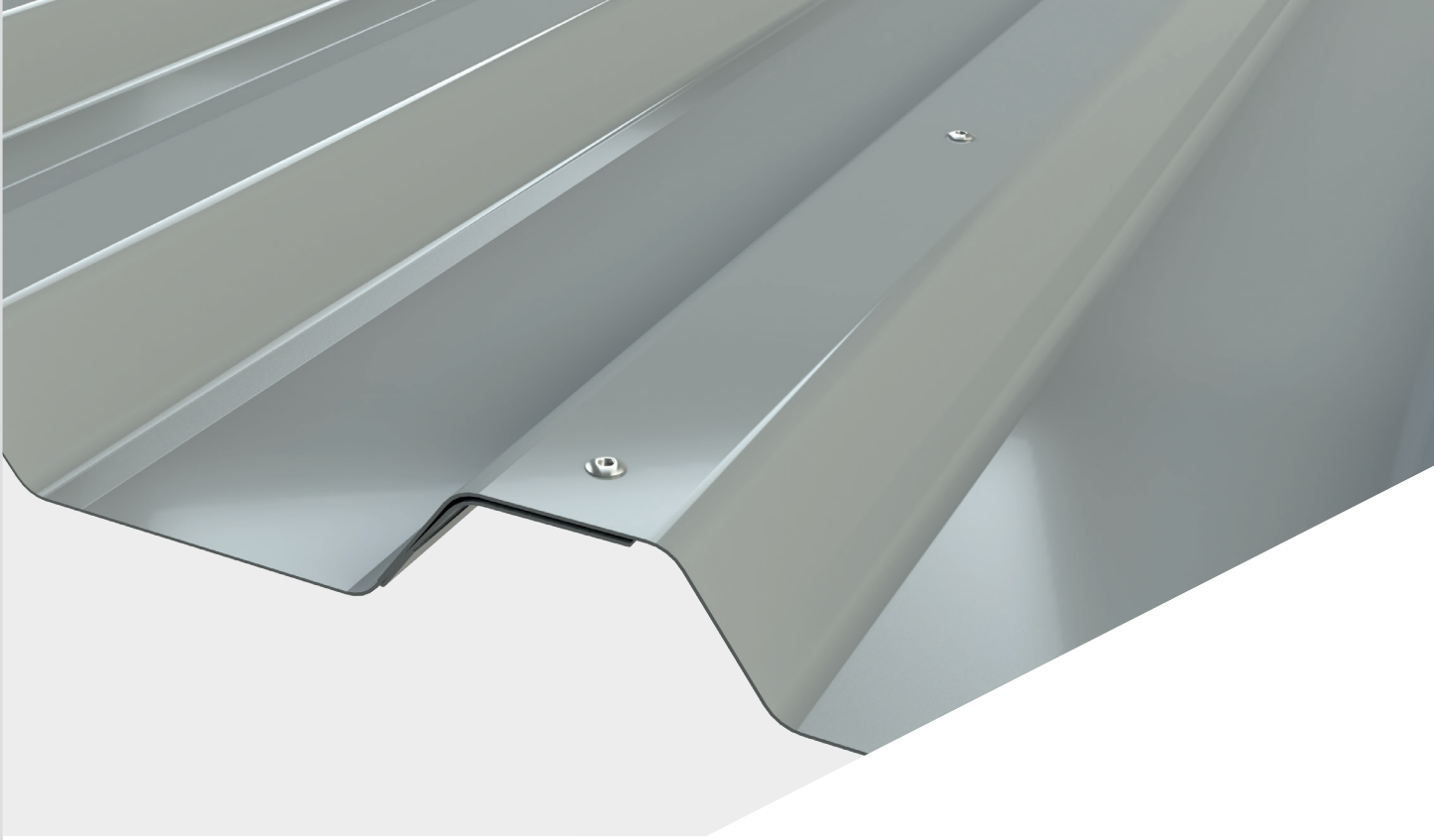


## OPTIONS

- 1 Powder coated in any desired RAL colour

## SECTION

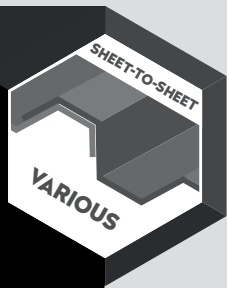




**APPLICATION**

Using the table below you can easily determine the sufficient blind rivet length.

Size	Thickness (mm)														Article code	
	0,5	1,0	2,0	3,0	4,0	5,0	6,0	7,0	8,0	9,0	10,0	12,0	14,0	16,0		
4,0x10 mm																20130040010





# GAS-TIGHT BLIND RIVET CUP SS A2 / C1

## DIMENSIONS

Product	D1	D2	d	P	k	L	Pre-drill
Gas-tight blind rivet CUP, 4,0 x 10 mm, A2/C1	4,0	8,0	2,3	≥ 27 mm	1,3	10,0	4,1

## MECHANICAL PROPERTIES

Product	Shear force	Tensile strength
Gas-tight blind rivet CUP, 4,0 x 10 mm, A2/C1	3000 N	4000 N

## ORDER INFORMATION

Product	Size	Packaging	Article code
Gas-tight blind rivet CUP, 4,0 x 10 mm, A2/C1	4,0 x 10 mm	500 pcs	20130040010

*Other types and measurements available on request.*

## CERTIFICATES



QUALITY  
CONFIRMED

