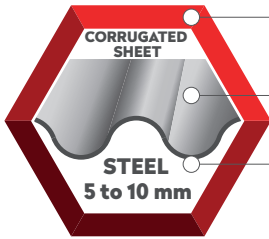




CORRUGATED SHEET SELF-DRILLING SCREW DP5

APPLICATION



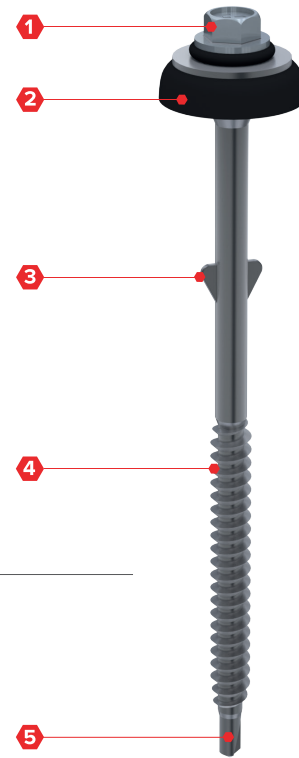
Bi-metal A2 304

Corrugated Sheet

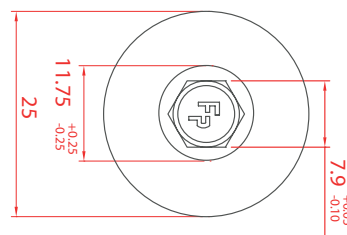
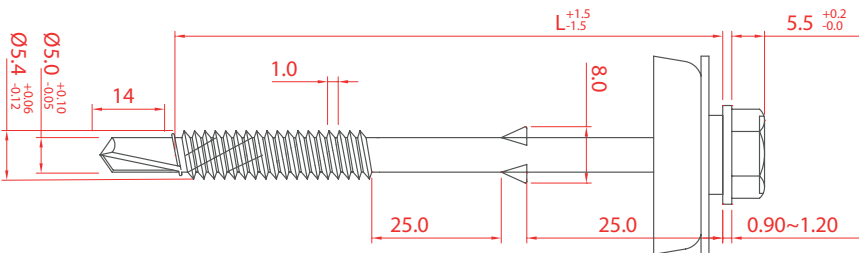
Steel 5 to 10 mm

SPECIFICATION

- 1 Head style 5/16" (8 mm)
- 2 EPDM with SS washer 25 mm
- 3 Wings to enlarge drilling hole in corrugated sheet
- 4 Thread for substructure steel 5 to 10 mm
- 5 Drilling point 5 (hardened steel)

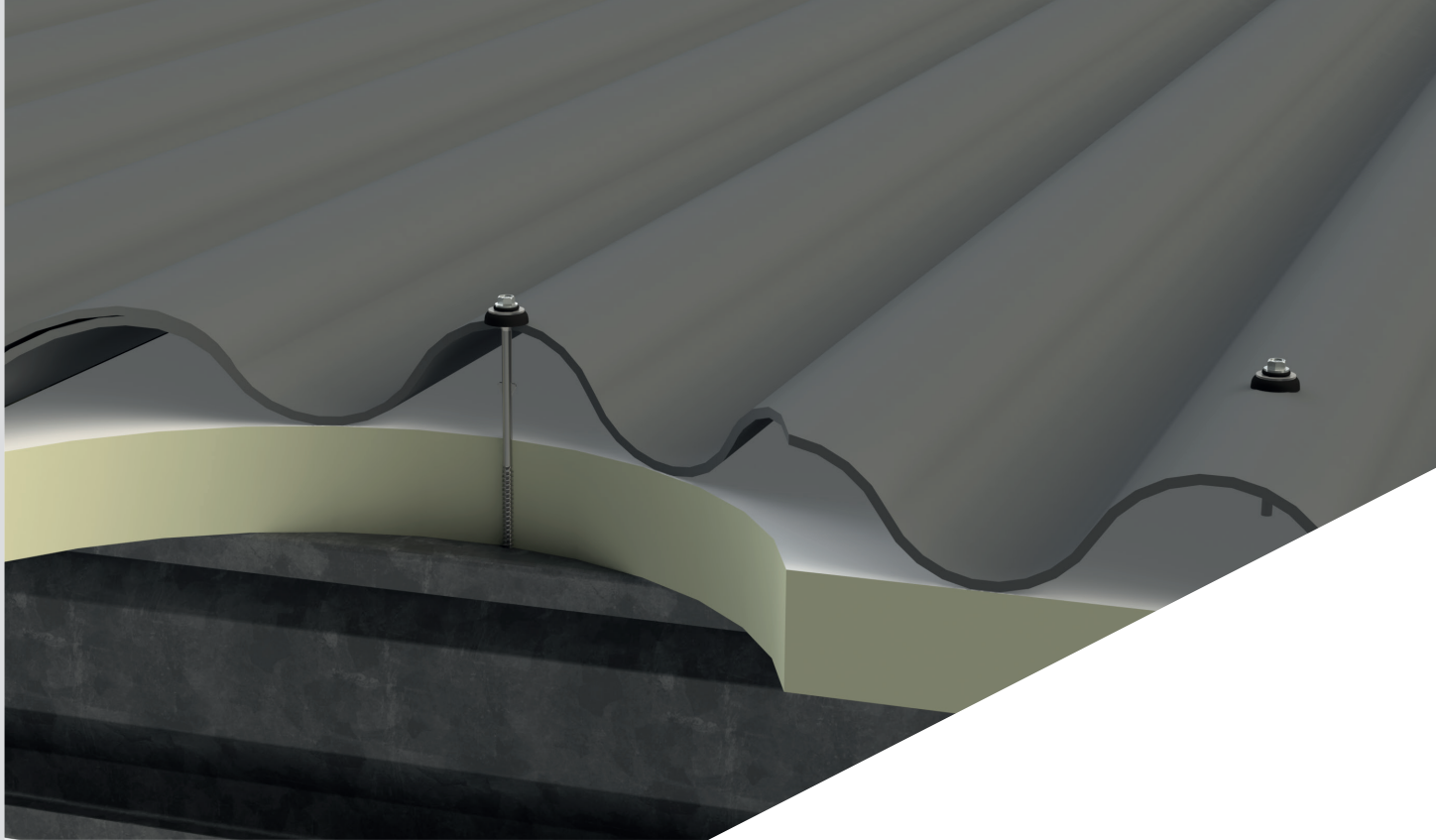


SECTION



CORRUGATED SHEETS - STEEL 5 TO 10 MM - BI-METAL A2 304





APPLICATION

Using the table below you can easily determine the sufficient screw length.

Size	Insulation thickness (mm)													Article code
	20	40	60	80	100	120	140	160	180	200	220	240	260	
6,3 x 120 mm	Without insulation													1501056312025

ORDER INFORMATION

Product	Description	Size	EPDM	Packaging	Article code
Corrugated Sheet Screw	Bi-metal A2 304, DP5	6,3 x 120 mm	25 mm	100 pcs/box	1501056312025



More information on materials, application, specific properties and certification can be found in chapter 10.

