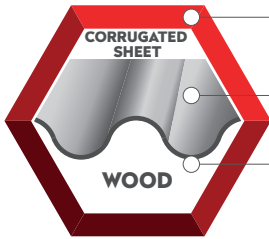




CORRUGATED SHEET SCREW A2/H PLUS DP2

APPLICATION



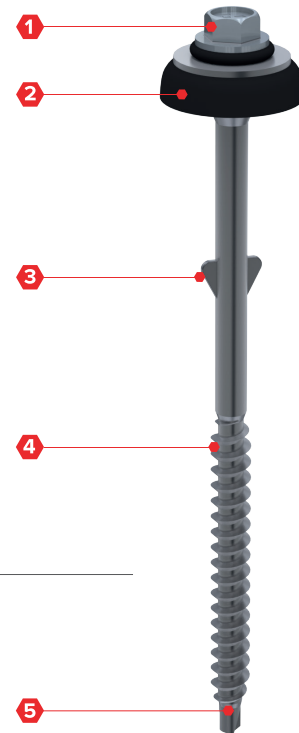
RVS A2 304

Golfplaatbevestiger

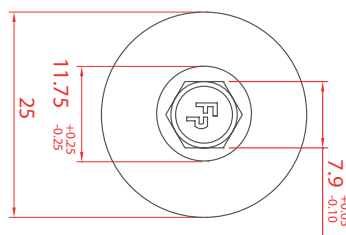
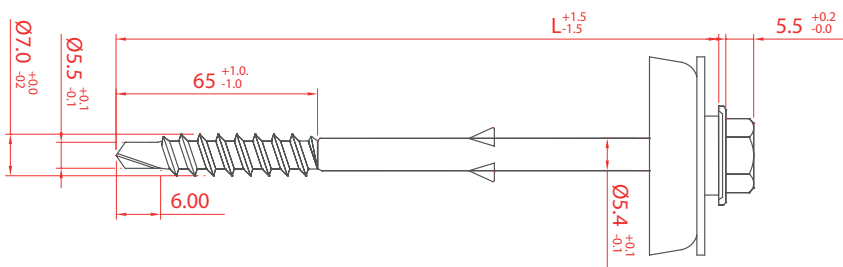
Hout

SPECIFICATION

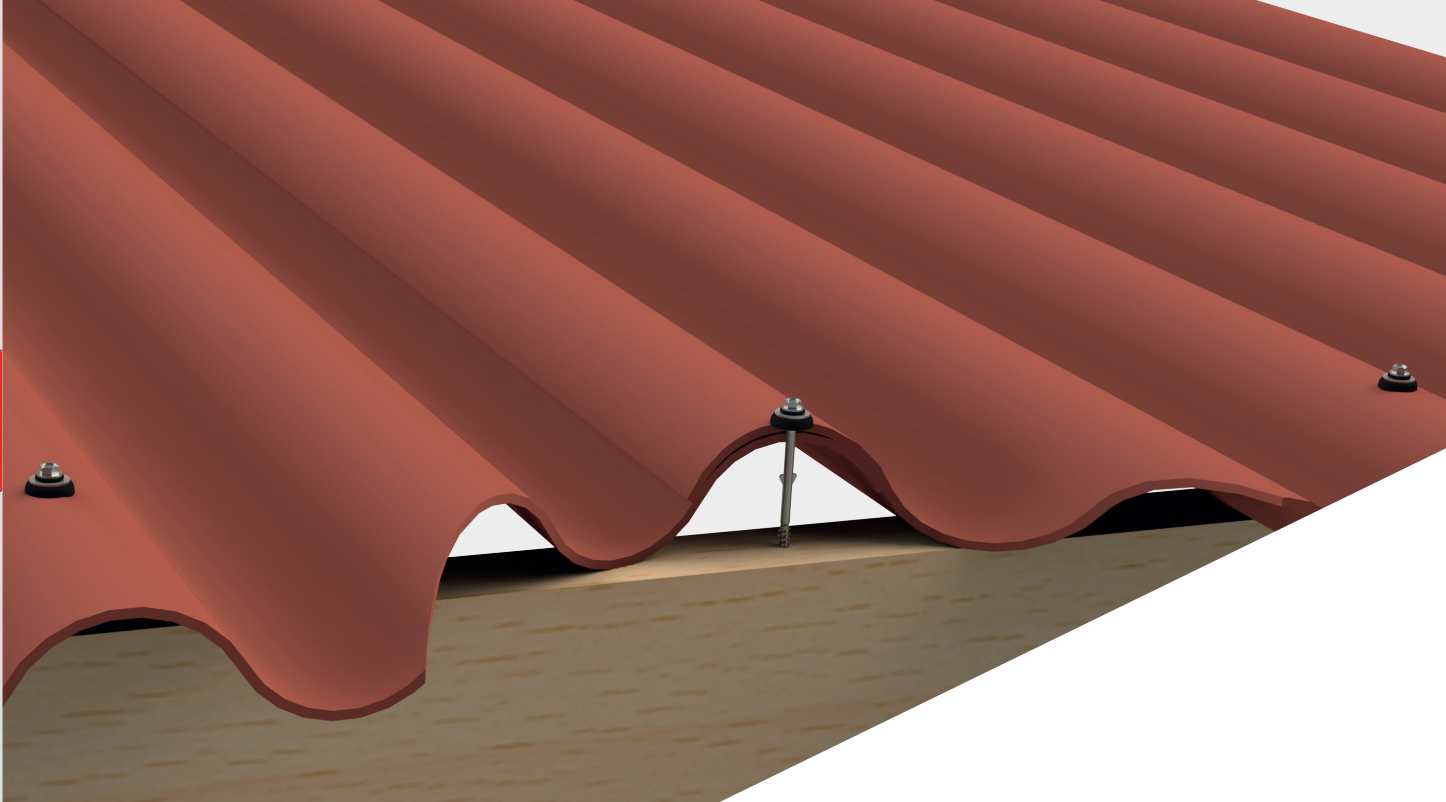
- 1 Head style 5/16" (8 mm)
- 2 EPDM with SS washer 25 mm
- 3 Wings to enlarge drilling hole in corrugated sheet
- 4 Thread for substructure wood
- 5 Drilling point 2 reduced



SECTION



CORRUGATED SHEETS - WOOD - SS A2 304



APPLICATION

Using the table below you can easily determine the sufficient screw length.

Size	Insulation thickness (mm)													Article code	
	20	40	60	80	100	120	140	160	180	200	220	240	260		280
7,0 x 120 mm	Without insulation													1502027012025	
7,0 x 140 mm	0 - 20 mm														1502027014025
7,0 x 160 mm		20 - 40 mm													1502027016025
7,0 x 180 mm			40 - 60 mm												1502027018025
7,0 x 200 mm				60 - 80 mm											1502027020025
7,0 x 220 mm					80 - 100 mm										1502027022025

ORDER INFORMATION

Product	Size	Description	EPDM	Packaging	Article code
Corrugated sheet screw	7,0 x 120 mm	SS A2 304, A2/H Plus	25 mm	100 pcs/box	1502027012025
Corrugated sheet screw	7,0 x 140 mm	SS A2 304, A2/H Plus	25 mm	100 pcs/box	1502027014025
Corrugated sheet screw	7,0 x 160 mm	SS A2 304, A2/H Plus	25 mm	100 pcs/box	1502027016025
Corrugated sheet screw	7,0 x 180 mm	SS A2 304, A2/H Plus	25 mm	100 pcs/box	1502027018025
Corrugated sheet screw	7,0 x 200 mm	SS A2 304, A2/H Plus	25 mm	100 pcs/box	1502027020025
Corrugated sheet screw	7,0 x 220 mm	SS A2 304, A2/H Plus	25 mm	100 pcs/box	1502027022025



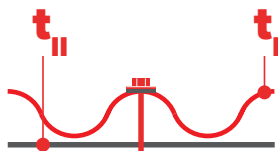
CORRUGATED SHEET SCREW A2/H PLUS DP2

CORRUGATED SHEET A2/H PLUS 7,0 x L - DP2

Materiales	
Screw	Stainless steel 1.4301 (A2) – conform EN ISO 3506
Washer	Stainless steel 1.4301 (A2) – conform EN ISO 3506
Material A (t_I)	Steel Quality S280GD, S320GD en S350GD - conform EN 10346
Material B (t_{II})	Steel Quality S235 – conform 10025-2 en S280GD, S320GD en S350GD - conform EN 10346
Drilling capacity	Wood



QUALITY
CONFIRMED



WASHER
DIAMETER
25 mm

		t_{N1} [mm]	L_{eff} [mm]
			36
	$N_{R,k}$ [kN]	Eternit Ecolor	1,28
		SVK Neptunus	1,90

Note

1. Above mentioned values are based on the technical approvals of the corrugated sheet producer. Limitations and application according the mentioned technical approval.

CERTIFICATES



QUALITY
CONFIRMED



