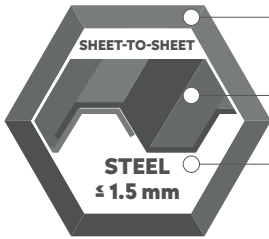




# SELF-DRILLING LOW PROFILE SCREW DP2 1/4" HEX

## APPLICATION



SS SUS410

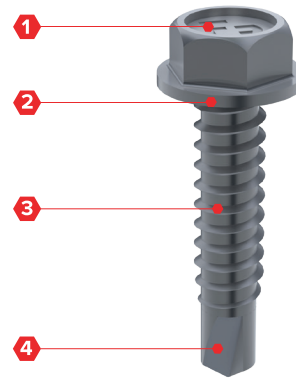
Sheet-to-sheet

Steel ≤ 1,5 mm



## SPECIFICATION

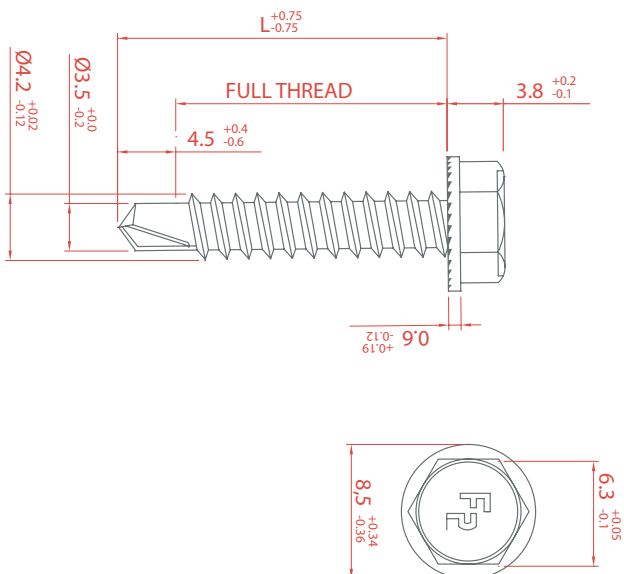
- ① Head style 1/4" hex with serrations
- ② EPDM bonded washer
- ③ Thread for substructure steel ≤ 1,5 mm
- ④ Drilling point 2 reduced



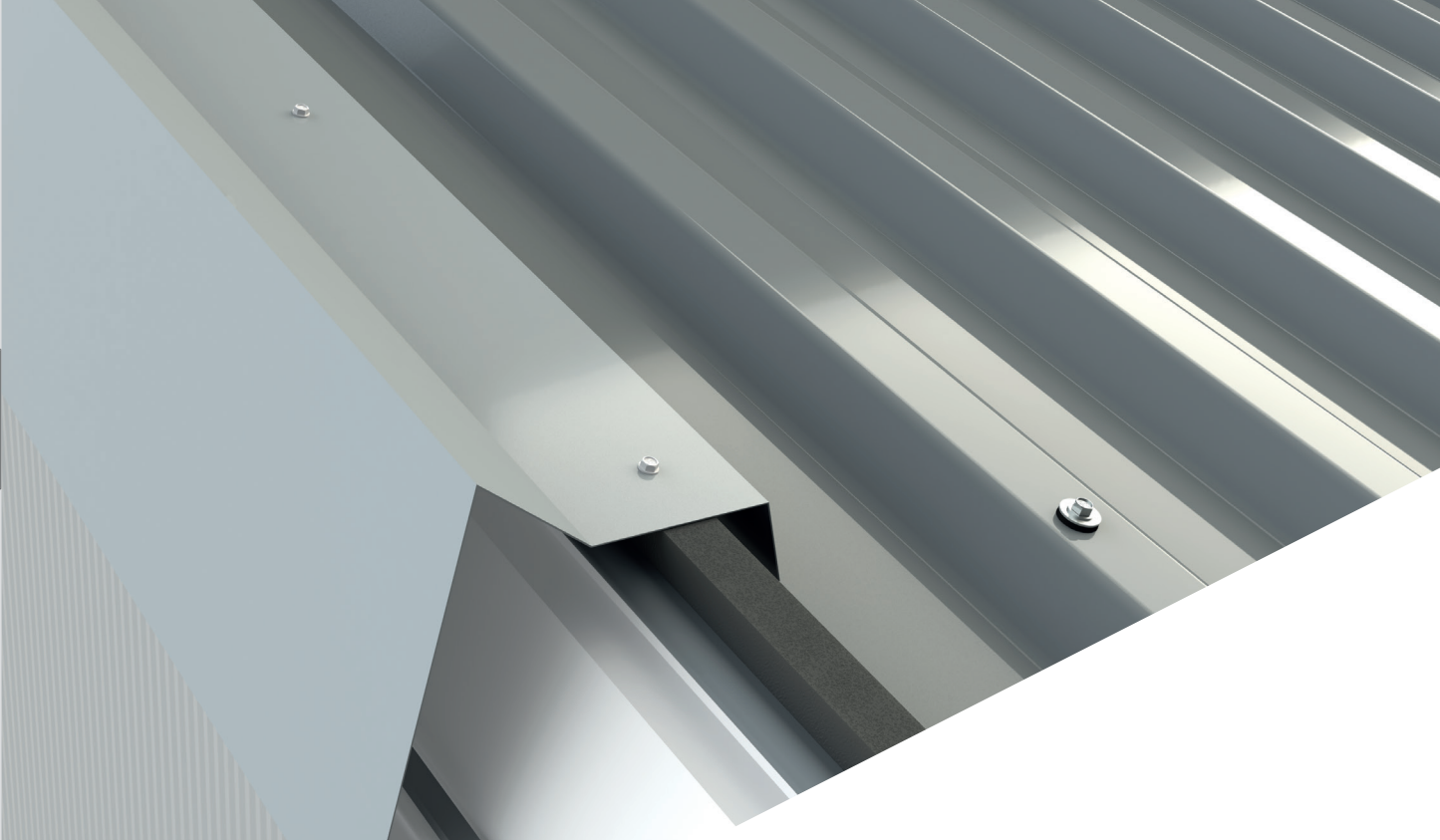
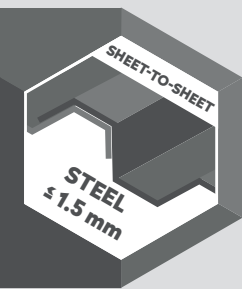
## OPTIONS

- ① Powder coated in any desired colour

## SECTION



STITCHING SCREWS - STEEL ≤ 1,5 MM - SS SUS410





## ORDER INFORMATION

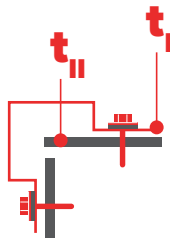
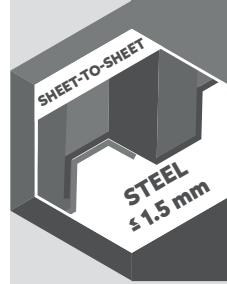
Product	Size	Packaging	Article code
Self-Drilling low profile screw 4,2 x L - DP2	4,2 x 16 mm	500 pcs/box	20030242016
Self-Drilling low profile screw 4,2 x L - DP2	4,2 x 19 mm	500 pcs/box	20030242019

**STITCHING SCREWS - STEEL ≈ 1,5 MM - SS SUS410**

**SELF-DRILLING LOW PROFILE SCREW 4,2 X L - DP2, HEAD 8,5 MM**

Materials	
Screw	SS 1.4006 (SUS410) - conform EN3506
Washer	SS 1.4301 (A2) - conform EN3506
Material A ( $t_{\perp}$ )	S280GD, S320GD and S350GD conform EN 10346
Material B ( $t_{\parallel}$ )	S235 conform EN 10025-2, S280GD, S320GD and S350GD conform EN 10346
Drilling capacity	Steel $\leq 1,5$ mm



	$t_{N1}$ [mm]	$t_{\parallel}$ [mm]										
		0,40	0,50	0,55	0,63	0,75	0,88	1,00	1,13	1,25	1,50	2,00
 $V_{R,k}$ [kN]	0,40	0,57	0,57	0,57	0,57	0,57	0,57	0,57	0,57	0,57	0,57	0,57
	0,50	0,57	0,84	0,84	0,84	0,84	0,84	0,84	0,84	0,84	0,84	0,84
	0,55	0,57	0,84	0,99	0,99	0,99	0,99	0,99	0,99	0,99	0,99	0,99
	0,63	0,57	0,84	0,99	1,22	1,22	1,22	1,22	1,22	1,22	1,22	1,22
	0,75	0,57	0,84	0,99	1,22	1,57	1,57	1,57	1,57	1,57	1,57	1,57
	0,88	0,57	0,84	0,99	1,22	1,57	2,39	2,39	2,39	2,39	2,39	2,39
	1,00	0,57	0,84	0,99	1,22	1,57	2,39	2,39	2,39	2,39	2,39	2,39
	1,13	0,57	0,84	0,99	1,22	1,57	2,39	2,39	2,39	2,39	2,39	2,39
	1,25	0,57	0,84	0,99	1,22	1,57	2,39	2,39	2,39	2,39	2,39	2,39
 $N_{R,k}$ [kN]	0,40	0,22	0,29	0,34	0,43	0,55	0,86	0,87	0,87	0,87	0,87	0,87
	0,50	0,22	0,29	0,34	0,43	0,55	0,86	1,07	1,29	1,35	1,35	1,35
	0,55	0,22	0,29	0,34	0,43	0,55	0,86	1,07	1,29	1,46	1,46	1,46
	0,63	0,22	0,29	0,34	0,43	0,55	0,86	1,07	1,29	1,49	1,64	1,64
	0,75	0,22	0,29	0,34	0,43	0,55	0,86	1,07	1,29	1,49	1,91	1,91
	0,88	0,22	0,29	0,34	0,43	0,55	0,86	1,07	1,29	1,49	1,92	2,31
	1,00	0,22	0,29	0,34	0,43	0,55	0,86	1,07	1,29	1,49	1,92	2,31
	1,13	0,22	0,29	0,34	0,43	0,55	0,86	1,07	1,29	1,49	1,92	2,31
	1,25	0,22	0,29	0,34	0,43	0,55	0,86	1,07	1,29	1,49	1,92	2,31

**Note**

1. Above mentioned values are characteristic values
2. To determine the design value we advise to apply a material factor of  $\gamma_m = 1,33$ .
3. You can find further information and calculation examples on page 10.1.7.

**STITCHING SCREWS - STEEL  $\leq 1,5$  MM - SS SUS410**

